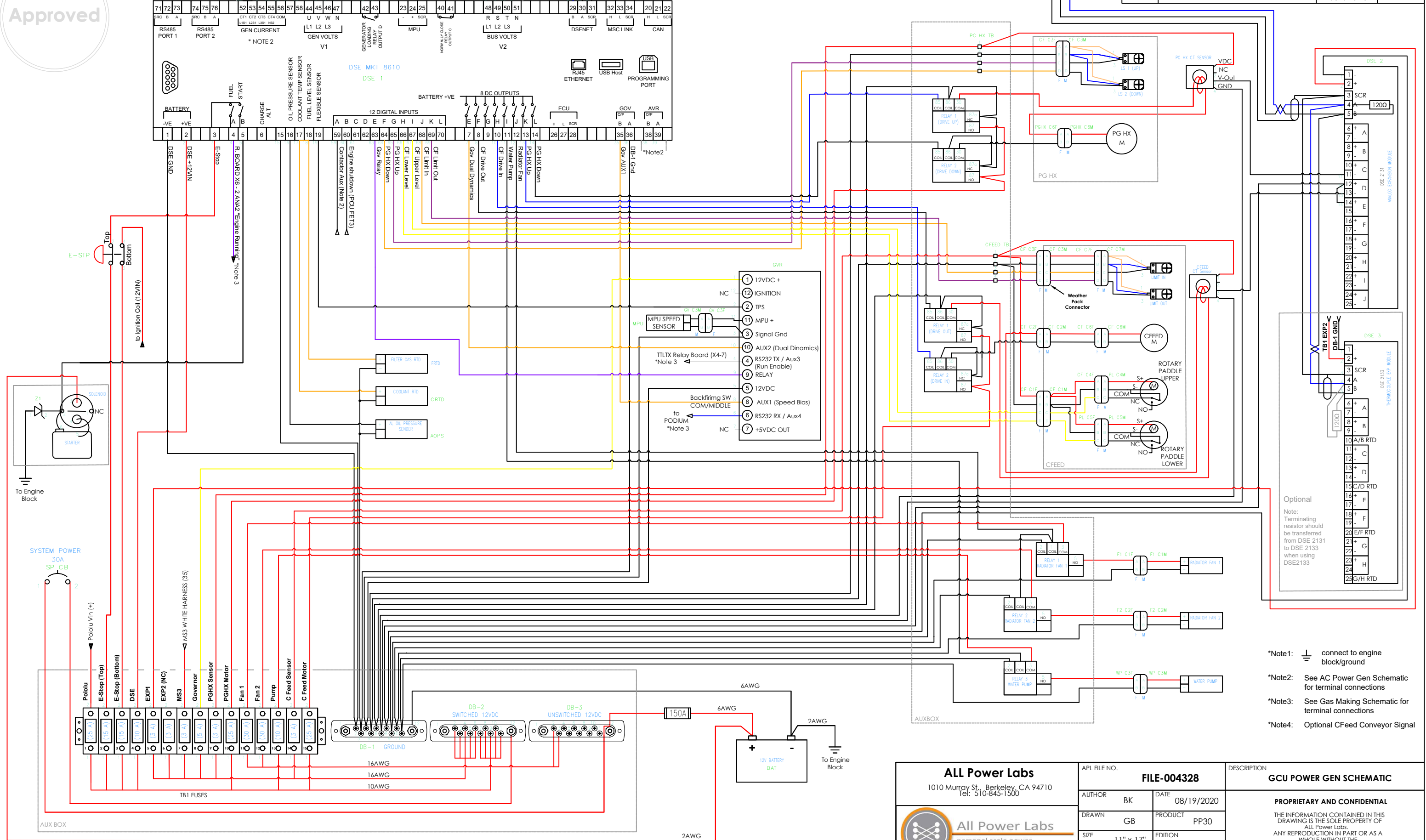




REVISION HISTORY			
REV	DESCRIPTION	DATE	AUTHOR
12	Draft Release to Arena Production	7/31/2020	BK



- \*Note1: connect to engine block/ground
- \*Note2: See AC Power Gen Schematic for terminal connections
- \*Note3: See Gas Making Schematic for terminal connections
- \*Note4: Optional CFeed Conveyor Signal

<b>ALL Power Labs</b> 1010 Murray St., Berkeley, CA 94710 Tel: 510-845-1500 	APL FILE NO.	<b>FILE-004328</b>	DESCRIPTION <b>GCU POWER GEN SCHEMATIC</b>  <b>PROPRIETARY AND CONFIDENTIAL</b>  THE INFORMATION CONTAINED IN THIS DRAWING IS THE SOLE PROPERTY OF ALL Power Labs. ANY REPRODUCTION IN PART OR AS A WHOLE WITHOUT THE WRITTEN PERMISSION OF ALL Power Labs IS PROHIBITED.		
	AUTHOR	BK		DATE	08/19/2020
	DRAWN	GB		PRODUCT	PP30
	SIZE	11" x 17"		EDITION	12
SHEET 1 OF 1					